



EPA

Website Information Sheet

Document Ref: EWC-D-003

Acute Kidney Injury (AKI) Information Page

Changes from previous revision
First page removed – incorrect information.

| | |
|--|------------------|
| Author/Reviewer | Martyn Hammond |
| Authorised by | Myra Del Rosario |
| Revision No. | 3 |
| Date of Issue | 20/11/2023 |
| Review interval | 1 year |
| Signed by Authoriser or Quality Lead (+ print name) | |

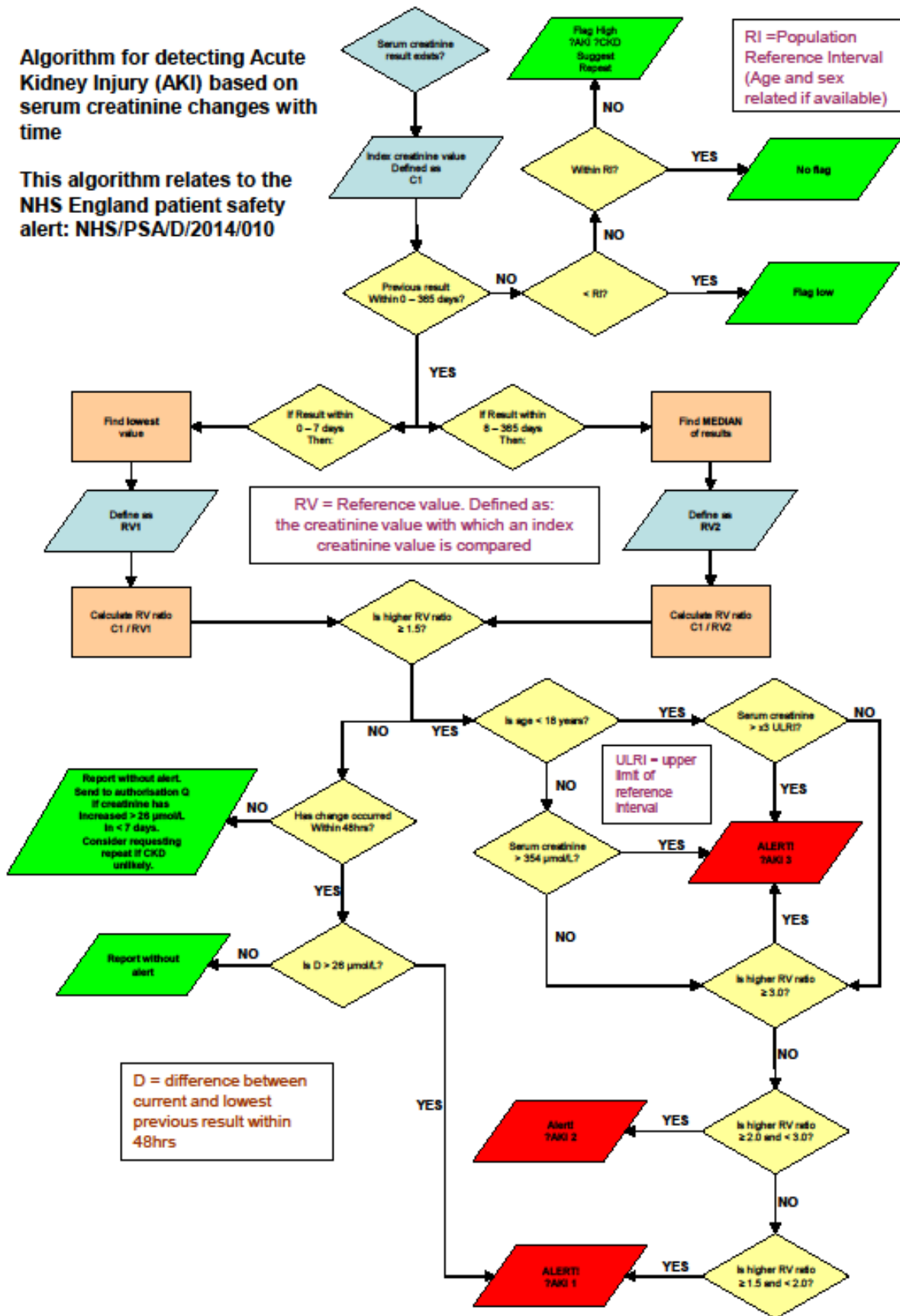
This is an uncontrolled copy unless signed in blue by the Authoriser or a Quality Lead. This document must not be printed or photocopied without authorisation.

| | | | |
|----------------------------|----------------------|----------------------------------|-------------------------|
| Eastern Pathology Alliance | | Title: Acute Kidney Injury (AKI) | Page 1 of 2 |
| Dept/Site : All | | Doc Ref: EWC-D-003 | Author: Martyn Hammond |
| Revision: 3 | Issue Date: 20/11/23 | Authorised by: Myra Del Rosario | Review interval: 1 year |



Algorithm for detecting Acute Kidney Injury (AKI) based on serum creatinine changes with time

This algorithm relates to the NHS England patient safety alert: NHS/PSA/D/2014/010



| | | | |
|----------------------------|----------------------|----------------------------------|-------------------------|
| Eastern Pathology Alliance | | Title: Acute Kidney Injury (AKI) | Page 2 of 2 |
| Dept/Site : All | | Doc Ref: EWC-D-003 | Author: Martyn Hammond |
| Revision: 3 | Issue Date: 20/11/23 | Authorised by: Myra Del Rosario | Review interval: 1 year |